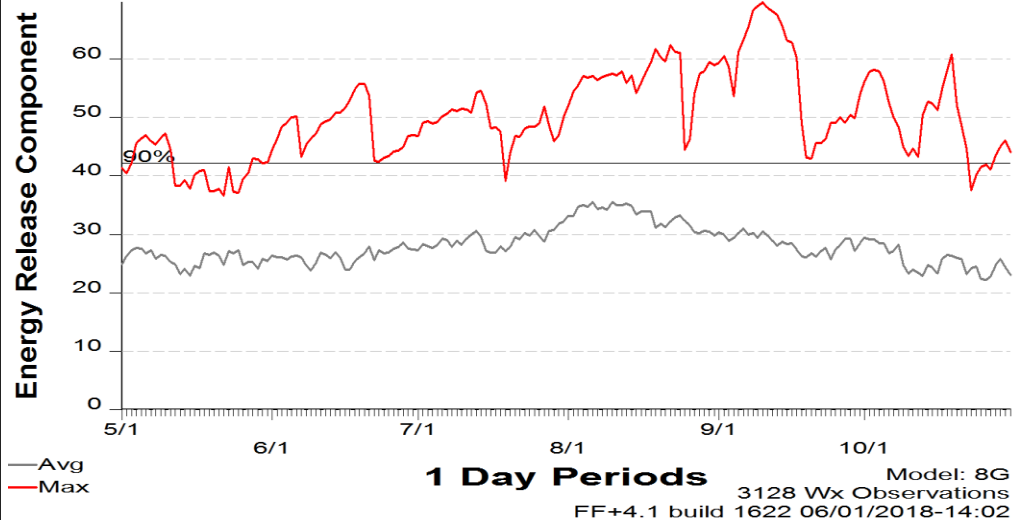


Fire Danger: Western Pineywoods Predictive Service Area

SIG - Western Pwoods 2001 - 2017



Critical Fire Weather Thresholds:

- Relative Humidity: 30% or less
- 20' Wind speed: 15 mph or greater
- Temperature: 90° or greater

Critical Dead Fuel Thresholds (10th %):

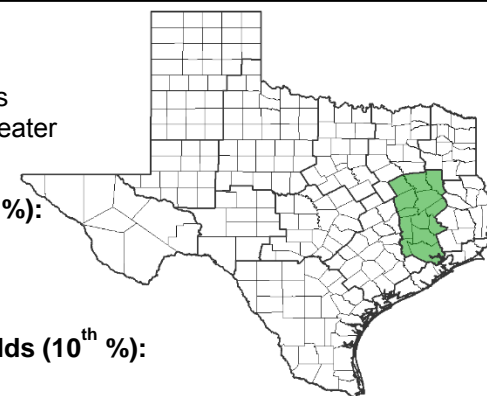
- 10-Hr : 7
- 100-Hr: 14
- 1000-Hr: 16

Critical Live Fuel Moisture Thresholds (10th %):

- Loblolly Pine : 112
- Red Oak: 88
- Yaupon: 102

Critical NFDRS Indices (90th %):

- Energy Release Component : 42
- Burning Index: 41

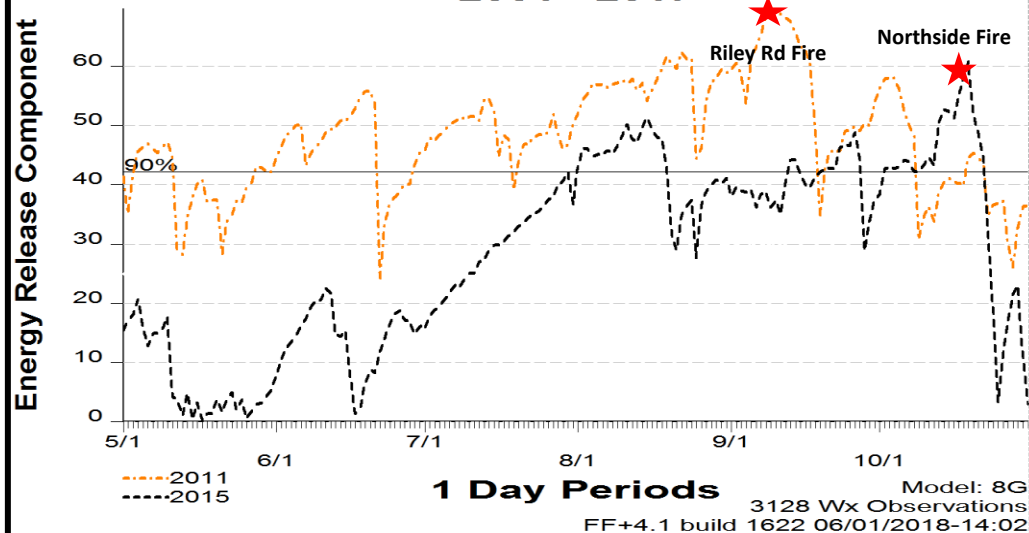


Western Pineywoods Texas TFS Fires and Acres Burned May-October

| | May | Jun | Jul | Aug | Sep | Oct |
|-------|-----|-----|-----|-----|-----|-----|
| Fires | 7 | 12 | 18 | 27 | 18 | 15 |
| Acres | 90 | 50 | 300 | 400 | 185 | 120 |

Years to Remember: 2011 2015

SIG - Western Pwoods 2001 - 2017



Fuel Model G – Short Needle (Heavy Dead)

Remember what Fire Danger tells you:

- ✓ Energy Release Component gives seasonal trends calculated from 2 PM temperature, humidity, 24-hour Min and Max Temperature and Relative Humidity, and Precipitation.
- ✓ Wind is NOT part of the ERC calculation.
- ✓ Watch local conditions and variations across the landscape –Fuels, Weather and Topography.
- ✓ Stay informed of local fire weather forecasts, especially **WIND**.

Past Experience:

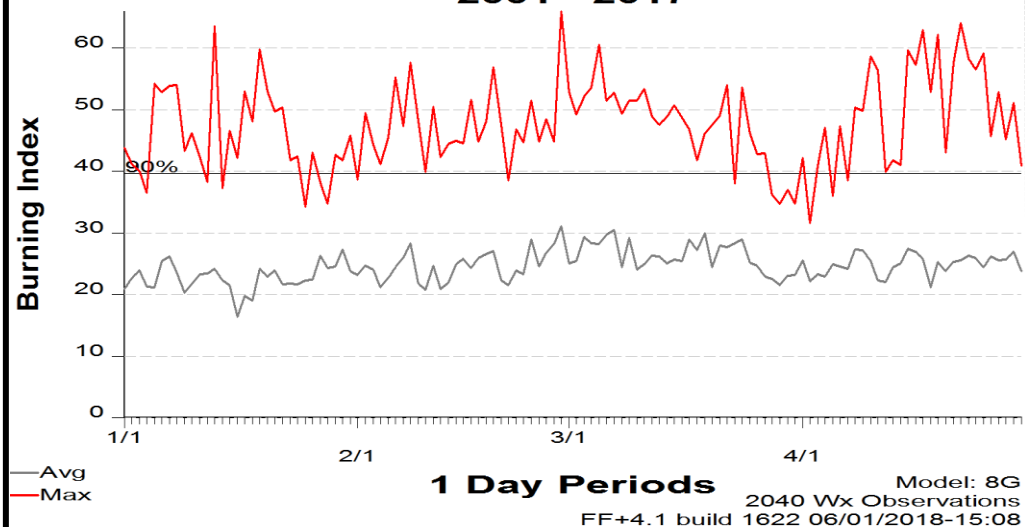
The Riley Road fire occurred 9/5/2011 in Montgomery County burning 19,960 acres, destroying 73 homes. Strong subsidence from tropical storm Lee and an approaching cold front from the NW provided a strong boundary of instability and extremely critical weather. Significant factors also included high risk pine timber fuels, densely populated area and extreme fuel dryness. Northerly winds around 10 mph with gusts to 24, min. RH 12% and max. temps. of 95 degrees observed at the Conroe RAWS. Live fuel moisture measured from loblolly pine in Montgomery County was 129%. The 10th percentile for loblolly pine in the Western Pineywoods PSA is 112%.

Responsible Agency: Mike Dunivan, Texas A&M Forest Service
May 2018



Fire Danger: Western Pineywoods Predictive Service Area

SIG - Western Pwoods 2001 - 2017



Critical Fire Weather Thresholds:

- Relative Humidity: 30% or less
- 20' Wind speed: 15 mph or greater
- Temperature: 90° or greater

Critical Dead Fuel Thresholds (10th %):

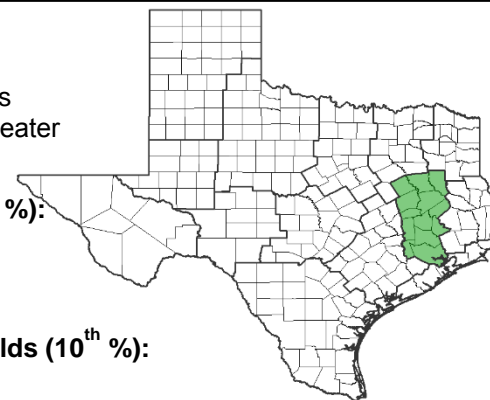
- 10-Hr : 7
- 100-Hr: 14
- 1000-Hr: 16

Critical Live Fuel Moisture Thresholds (10th %):

- Loblolly Pine : 112
- Red Oak: 88
- Yaupon: 102

Critical NFDRS Indices (90th %):

- Energy Release Component : 42
- Burning Index: 41

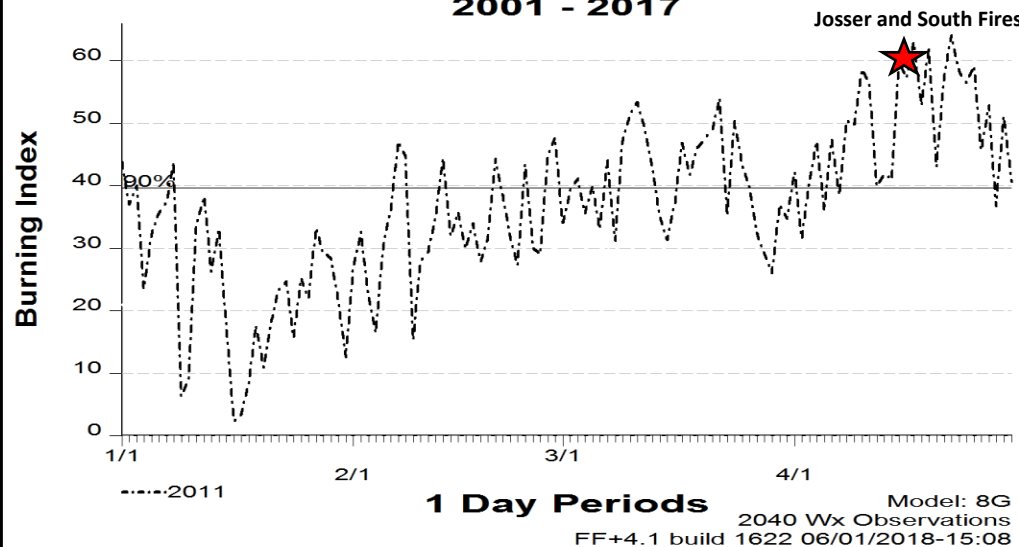


Western Pineywoods Texas Normal Fires and Acres Burned January-April

| | Jan | Feb | Mar | Apr |
|-------|-----|-----|-----|-----|
| Fires | 15 | 16 | 18 | 10 |
| Acres | 150 | 285 | 300 | 120 |

Years to Remember: 2011

SIG - Western Pwoods 2001 - 2017



Remember what Fire Danger tells you:

- ✓ Burning Index gives day-to-day fluctuations calculated at 2 PM temperature, humidity, and wind.
- ✓ Wind is part of the BI calculation.
- ✓ Watch local conditions and variations across the landscape –Fuels, Weather, and Topography.
- ✓ Stay informed of local fire weather forecasts, especially **WIND**.

Past Experience:

The Josserand South Fire occurred on 4/15/11 in Trinity County, burning 1,369 acres and was started by debris burning. The majority of the fire burned in high risk pine plantation. A minimum RH of 11%, maximum temperature of 80 degrees, sustained winds from 10-15 mph from the Northwest with gusts to 29 mph was observed at the Lukfin RAWS. Extreme fire behavior was observed in plantation fuels, associated with the passage of a strong dry cold front. Live fuel moisture measured from pine in nearby Houston County, was 102%. The 10th percentile for pine in the Western Pineywoods PSA is 112%.

Fuel Model G – Short Needle (Heavy Dead)

Responsible Agency: Mike Dunivan, Texas A&M Forest Service
May 2018

