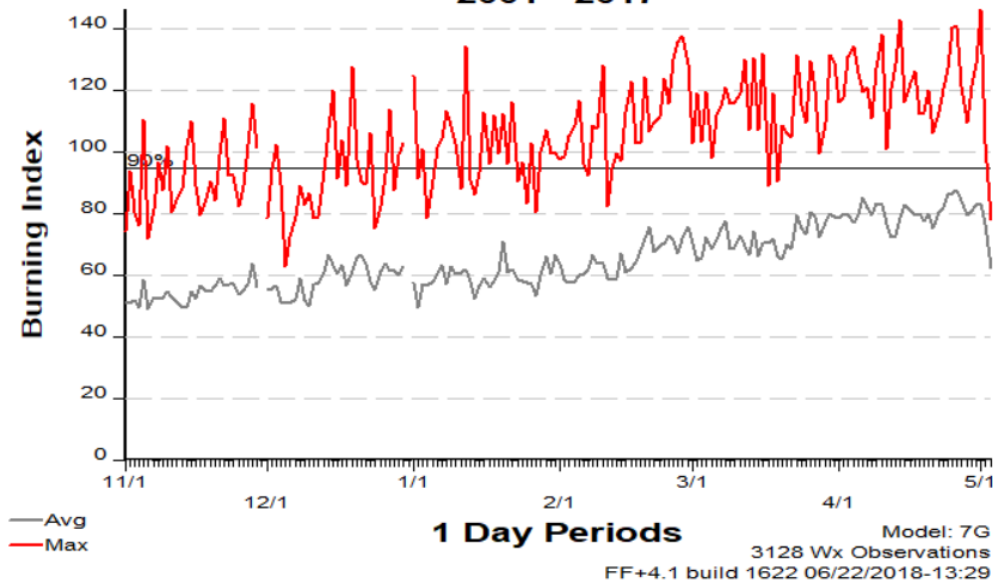


Fire Danger: Trans Pecos Predictive Service Area

SIG - Trans Pecos
2001 - 2017



Critical Fire Weather Thresholds:

- Relative Humidity: 15% or less
- 20' Wind speed: 20 mph or greater
- Temperature: 90° or greater

Critical Dead Fuel Thresholds (10th %):

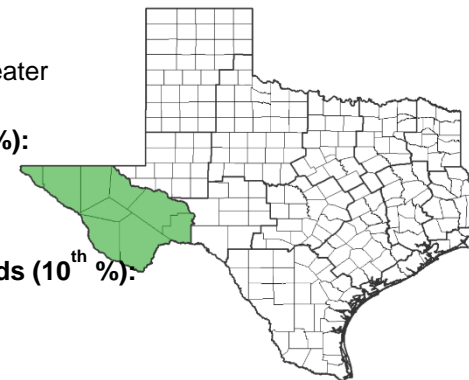
- 10-Hr: 2
- 100-Hr: 5
- 1000-Hr: 6

Critical Live Fuel Moisture Thresholds (10th %):

- Pinyon Pine: 85
- Juniper: 64
- Gray Oak: 70

Critical NFDRS Indices (90th %):

- Energy Release Component: 91
- Burning Index: 100

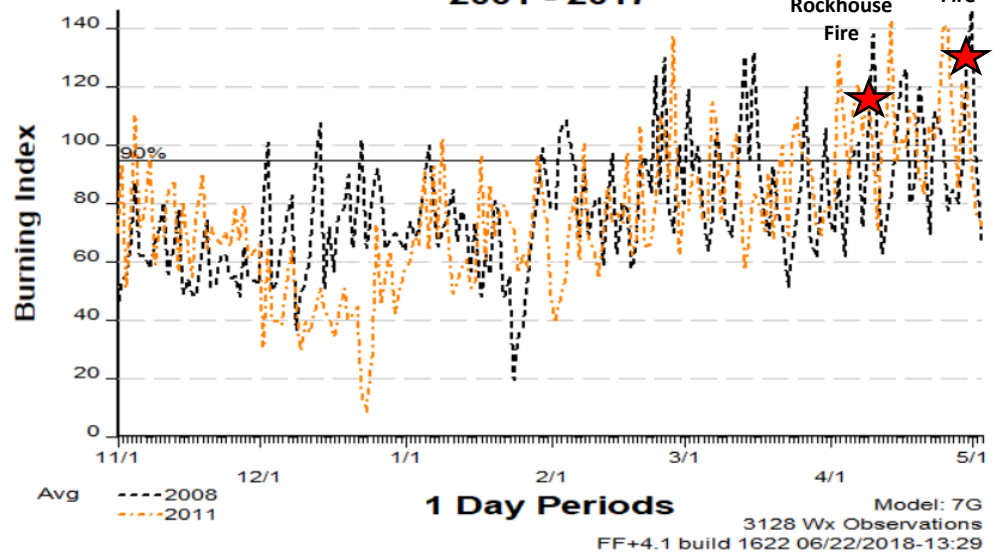


Trans Pecos Normal Fires and Acres Burned November - May

| | Nov | Dec | Jan | Feb | Mar | Apr | May |
|-------|-----|-----|-----|-----|-------|-------|-----|
| Fires | 0 | 0 | 0 | 0 | 1 | 1 | 2 |
| Acres | 0 | 0 | 0 | 0 | 1,000 | 1,500 | 800 |

Years to Remember: 2008 & 2011

SIG - Trans Pecos
2001 - 2017



Fuel Model G – Short Needle (Heavy Dead)

Remember what Fire Danger tells you:

- ✓ BI gives day-to-day fluctuations calculated from 2 PM temperature, humidity and wind.
- ✓ Wind is part of the BI calculation.
- ✓ Watch local conditions and variations across the landscape – Fuels, Weather and Topography.
- ✓ Stay informed of local fire weather forecasts, especially **WIND**.

Past Experience:

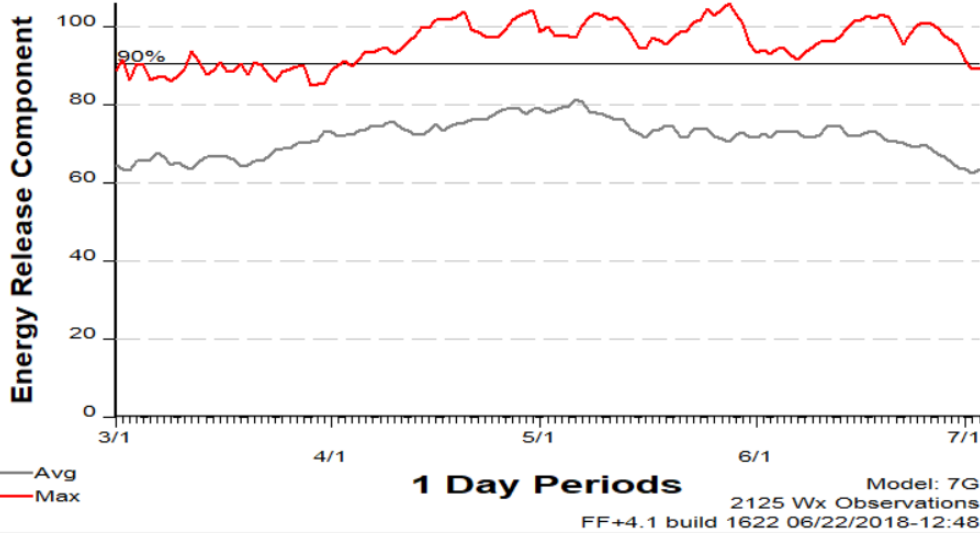
On April 30th, 2008, the Huckabee fire occurred in Pecos County as a result of power lines blowing down from high wind. This fire burned a total of 98,168 acres. The BI on the 30th was 129 with an ERC of 98. The Rockhouse fire occurred in Jeff Davis County on 4/9/2011. This fire was associated with a Southern Plains Outbreak pattern and spread a distance of 33 miles in 5.5 hours, for an average rate of spread of 6 mph. The Rockhouse fire burned a total of 314,444 acres. The BI on the 9th was 117 with an ERC of 95.

Responsible Agency: Mike Dunivan, Texas A&M Forest Service
June 2018



Fire Danger: *Trans Pecos Predictive Service Area*

SIG - Trans Pecos 2001 - 2017



Critical Fire Weather Thresholds:

- Relative Humidity: 15% or less
- 20' Wind speed: 20 mph or greater
- Temperature: 90° or greater

Critical Dead Fuel Thresholds (10th %):

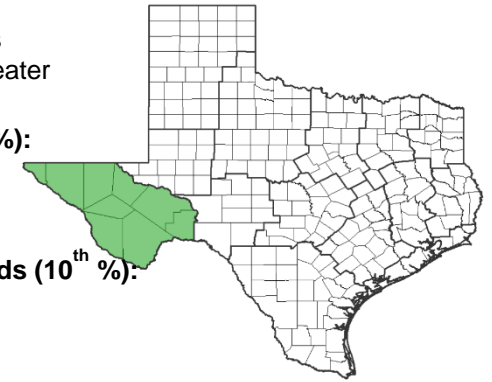
- 10-Hr: 2
- 100-Hr: 5
- 1000-Hr: 6

Critical Live Fuel Moisture Thresholds (10th %):

- Pinyon Pine: 85
- Juniper: 64
- Gray Oak: 70

Critical NFDRS Indices (90th %):

- Energy Release Component: 91
- Burning Index: 100

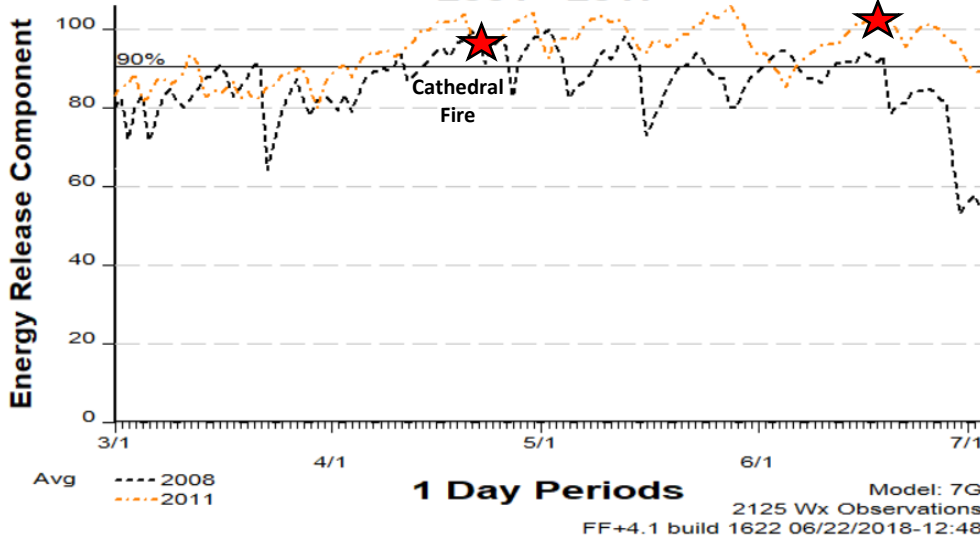


Trans Pecos Normal Fires and Acres Burned April - June

| | Apr | May | Jun |
|--------------|-------|-----|-------|
| <i>Fires</i> | 1 | 2 | 2 |
| <i>Acres</i> | 1,500 | 800 | 1,200 |

Years to Remember: 2008 & 2011

SIG - Trans Pecos 2001 - 2017



Fuel Model G – Short Needle (Heavy Dead)

Remember what Fire Danger tells you:

- ✓ ERC gives seasonal trends calculated from 2 PM temperature, humidity, daily temperature and RH ranges and precip duration.
- ✓ Wind is part of the BI calculation.
- ✓ Watch local conditions and variations across the landscape – Fuels, Weather and Topography.
- ✓ Stay informed of local fire weather forecasts, especially **WIND**.

Past Experience:

The Cathedral fire occurred in Brewster County on 4/24/2008 burning 23,000 acres. The Cathedral fire was initiated by lightning with outflow winds from thunderstorms enhancing fire spread. The ERC on the 24th was 96 with a BI of 107. On 6/18/2011, the DHI fire occurred burning 8,000 acres. Heavy herbaceous fuel loadings from rains in 2010 were present causing control difficulty. The ERC on the 18th was 102 with a BI of 88.

Responsible Agency: Mike Dunivan, Texas A&M Forest Service
June 2018

