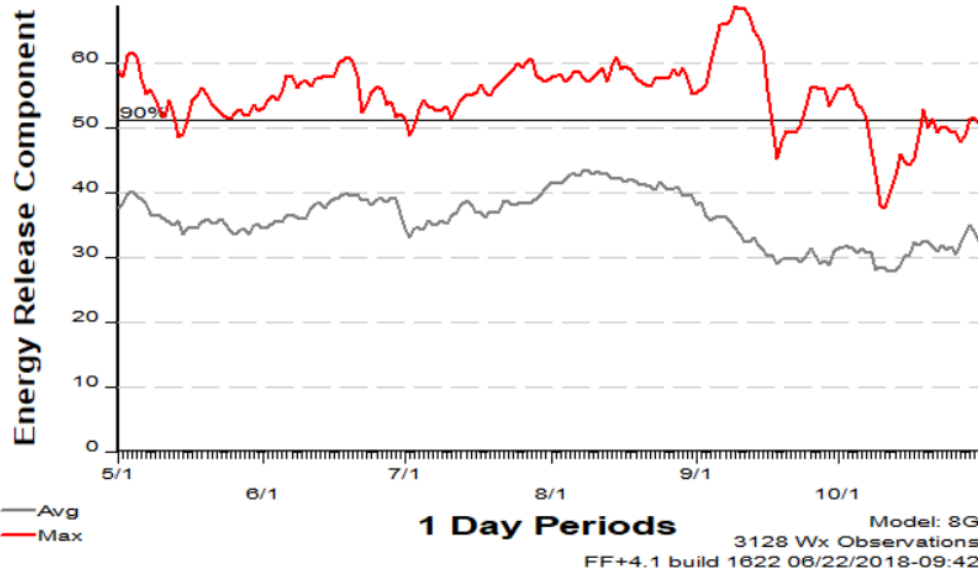


Fire Danger: South Texas Predictive Service Area

SIG - South Texas
2001 - 2017



Critical Fire Weather Thresholds:

- Relative Humidity: 30% or less
- 20' Wind speed: 15 mph or greater
- Temperature: 90° or greater

Critical Dead Fuel Thresholds (10th %):

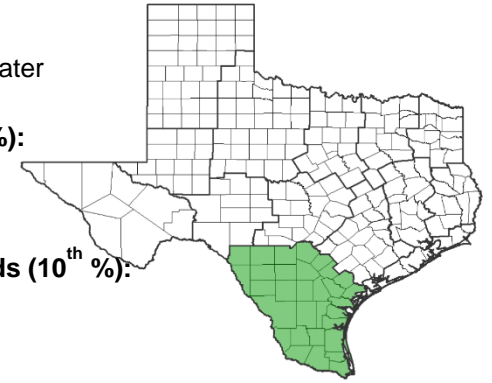
- 10-Hr : 7
- 100-Hr: 12
- 1000-Hr: 14

Critical Live Fuel Moisture Thresholds (10th %):

- Mesquite: 96
- Brazilian Bluewood: 96
- Lime Pricklyash: 74
- Whitebrush: 67

Critical NFDRS Indices (90th %):

- Energy Release Component: 51
- Burning Index: 56

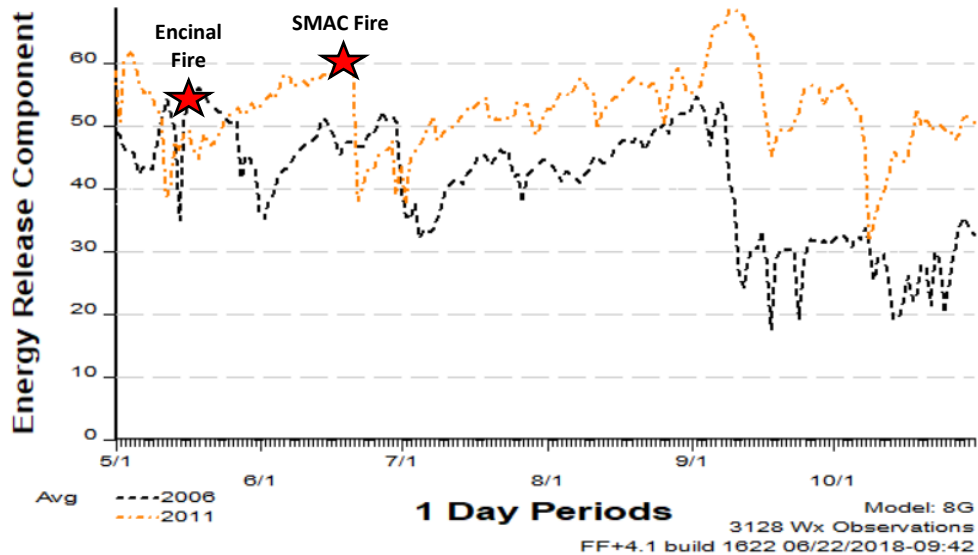


South Texas Normal Fires and Acres Burned May - October

	May	Jun	Jul	Aug	Sep	Oct
Fires	0	0	0	1	0	0
Acres	0	0	0	150	0	0

Years to Remember: 2006 & 2011

SIG - South Texas
2001 - 2017



Fuel Model G – Short Needle (Heavy Dead)

Remember what Fire Danger tells you:

- ✓ ERC gives seasonal trends calculated from 2 PM temperature, humidity, daily temperature and RH ranges and precip duration.
- ✓ Wind is part of the BI calculation.
- ✓ Watch local conditions and variations across the landscape – Fuels, Weather and Topography.
- ✓ Stay informed of local fire weather forecasts, especially **WIND**.

Past Experience:

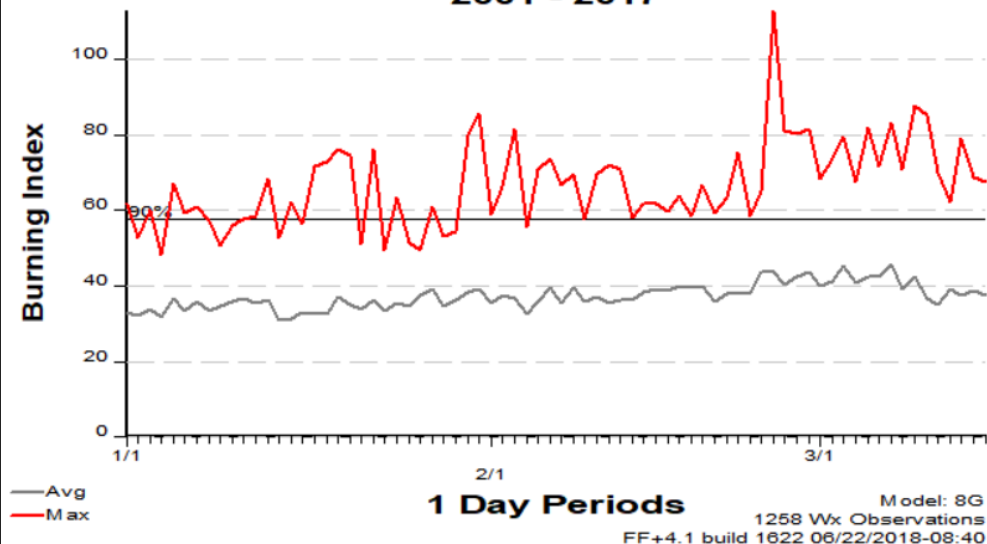
On May 16th, 2006 the Encinal fire in Webb County occurred burning 10,919 acres. The ERC on May 16th was 52 with a BI of 50. The SMAC Fire occurred on 6/18/2011 in Brooks County burning approximately 30,000 acres. Weather observations from the AWOS in Falfurrias included South to Southeast winds from 16-23 mph with gusts up to 31 mph, minimum RH of 28% and maximum temperature of 102 degrees. Extreme fire behavior was observed in grass and brush fuels. The ERC on the 18th was 60 with a BI of 71.

Responsible Agency: Mike Dunivan, Texas A&M Forest Service
June 2018



Fire Danger: South Texas Predictive Service Area

SIG - South Texas
2001 - 2017



Critical Fire Weather Thresholds:

- Relative Humidity: 30% or less
- 20' Wind speed: 15 mph or greater
- Temperature: 90° or greater

Critical Dead Fuel Thresholds (10th %):

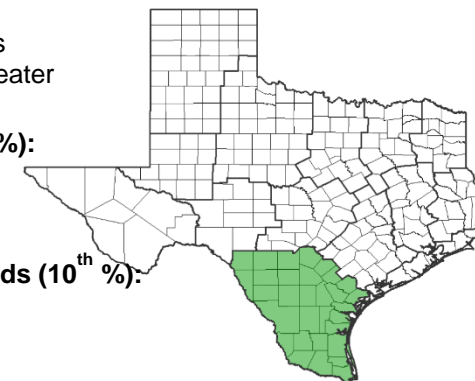
- 10-Hr : 7
- 100-Hr: 12
- 1000-Hr: 14

Critical Live Fuel Moisture Thresholds (10th %):

- Mesquite: 96
- Brazilian Bluewood: 96
- Lime Pricklyash: 74
- Whitebrush: 67

Critical NFDRS Indices (90th %):

- Energy Release Component: 51
- Burning Index: 56

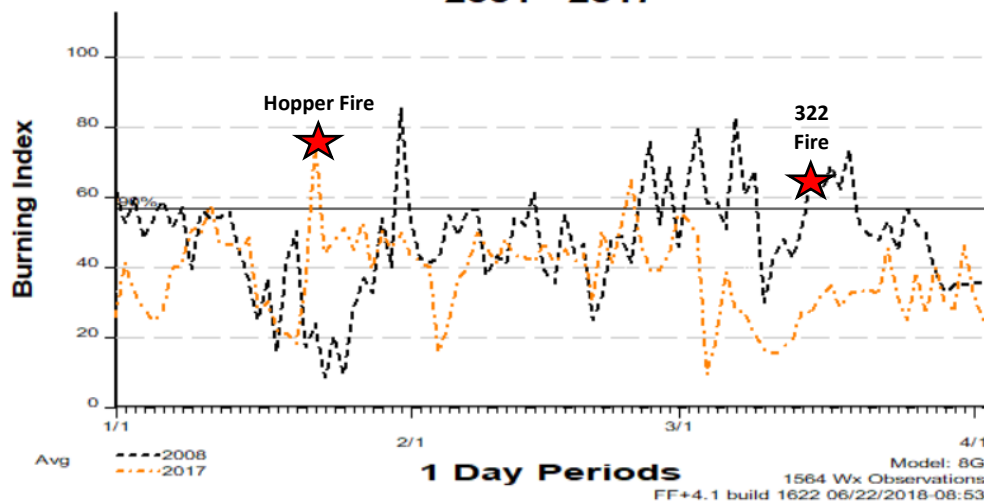


South Texas Normal Fires and Acres Burned January-March

	Jan	Feb	Mar
Fires	2	2	2
Acres	1,500	1,800	500

Years to Remember: 2008 & 2017

SIG - South Texas
2001 - 2017



Fuel Model G – Short Needle (Heavy Dead)

Remember what Fire Danger tells you:

- ✓ BI gives day-to-day fluctuations calculated from 2 PM temperature, humidity and wind.
- ✓ Wind is part of the BI calculation.
- ✓ Watch local conditions and variations across the landscape –Fuels, Weather and Topography.
- ✓ Stay informed of local fire weather forecasts, especially **WIND**.

Past Experience:

The 322 fire occurred on 3/14/2008 in Dimmitt County, burning 67,500 acres. The fire burned through most of the Chaparral Wildlife Management Area. Extreme fire behavior was observed in association with the passage of a strong dry cold front, critical fire weather, high herbaceous fuel loadings and low live fuel moisture in brush. Brush species, such as mesquite, had already leafed out and foliage had become mature due to abnormally high temperatures for that time of year. The BI the day of the fire was 66 with a ERC of 51. On 1/22/2017 the Hopper fire occurred burning 8,000 acres in Brooks county. The BI on the 22nd was 76 with an ERC of 33. Heavy herbaceous fuel loadings made control efforts difficult.

Responsible Agency: Mike Dunivan, Texas A&M Forest Service
June 2018

