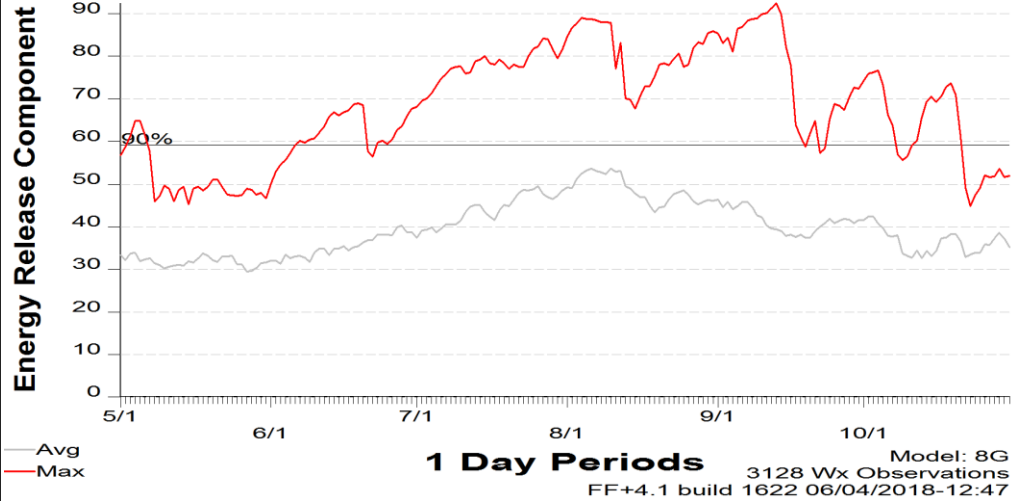


Fire Danger: Cross Timbers Predictive Service Area

SIG - Cross Timbers 2001 - 2017



Critical Fire Weather Thresholds:

- Relative Humidity: 25% or less
- 20' Wind speed: 20 mph or greater
- Temperature: 90° or greater

Critical Dead Fuel Thresholds (10th %):

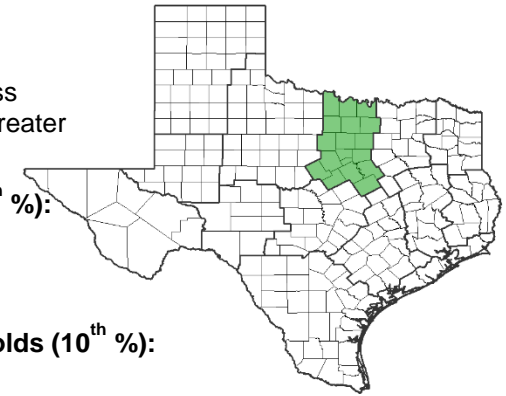
- 10-Hr : 6
- 100-Hr : 10
- 1000-Hr: 12

Critical Live Fuel Moisture Thresholds (10th %):

- Juniper : 78
- Mesquite: 92
- Live Oak: 80
- Post Oak: 75

Critical NFDRS Indices (90th %):

- Energy Release Component : 59
- Burning Index: 66

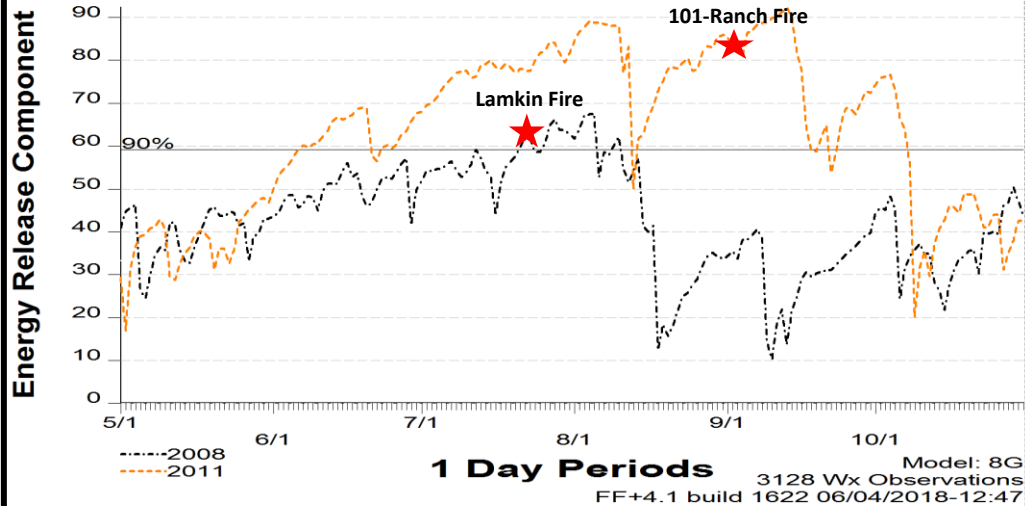


Cross Timbers TFS Fires and Acres Burned May-October

	May	Jun	Jul	Aug	Sep	Oct
Fires	1	2	2	4	1	1
Acres	50	100	200	500	120	80

Years to Remember: 2008,2011

SIG - Cross Timbers 2001 - 2017



Fuel Model G – Short Needle (Heavy Dead)

Remember what Fire Danger tells you:

- ✓ Energy Release Component gives seasonal trends calculated from 2 PM temperature, humidity, 24-hour Min and Max Temperature and Relative Humidity, and Precipitation.
- ✓ Wind is NOT part of the ERC calculation.
- ✓ Watch local conditions and variations across the landscape –Fuels, Weather and Topography.
- ✓ Stay informed of local fire weather forecasts, especially **WIND**.

Past Experience:

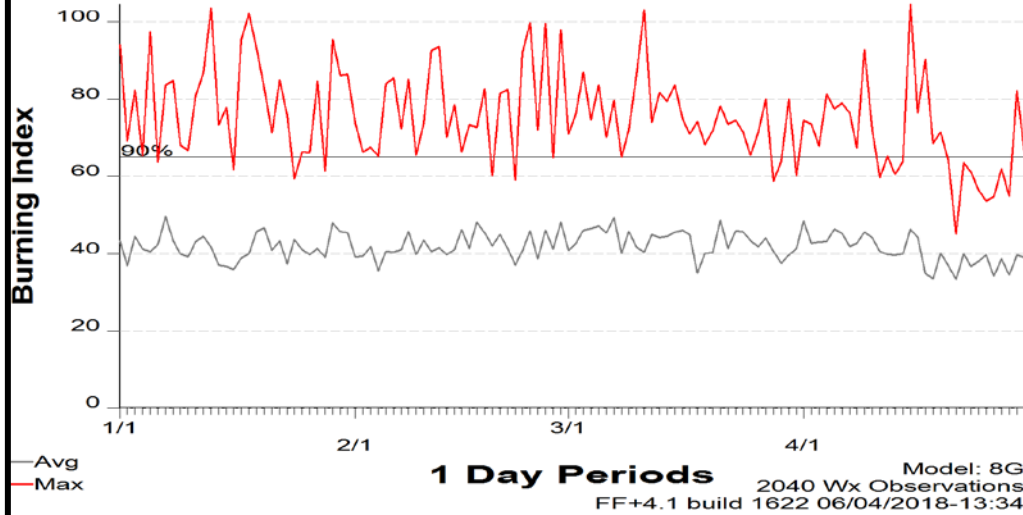
The 101 Ranch fire occurred on 8/30/2011 in Palo Pinto County burning 6555 acres and destroying 39 homes. Weather observations from the Possum Kingdom RAWS included South winds from 10-17 mph with gusts to 29, minimum RH of 12% and maximum temperature of 106 degrees. The fire burned in cured grasses and extremely dry juniper brush. Live fuel moisture, measured soon after the fire, from juniper in Palo Pinto County was 70%. The 10th percentile for juniper in the North Texas PSA is 78%.

Responsible Agency: Mike Dunivan, Texas A&M Forest Service
May 2018



Fire Danger: Cross Timbers Predictive Service Area

SIG - Cross Timbers 2001 - 2017



Critical Fire Weather Thresholds:

- Relative Humidity: 25% or less
- 20' Wind speed: 20 mph or greater
- Temperature: 90° or greater

Critical Dead Fuel Thresholds (10th %):

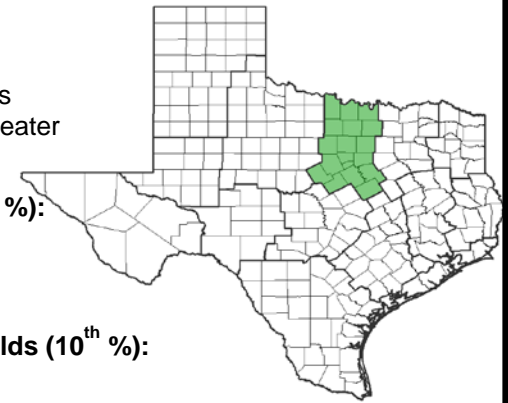
- 10-Hr : 6
- 100-Hr: 10
- 1000-Hr: 12

Critical Live Fuel Moisture Thresholds (10th %):

- Juniper : 78
- Mesquite: 92
- Live Oak: 80
- Post Oak: 75

Critical NFDRS Indices (90th %):

- Energy Release Component : 59
- Burning Index: 66

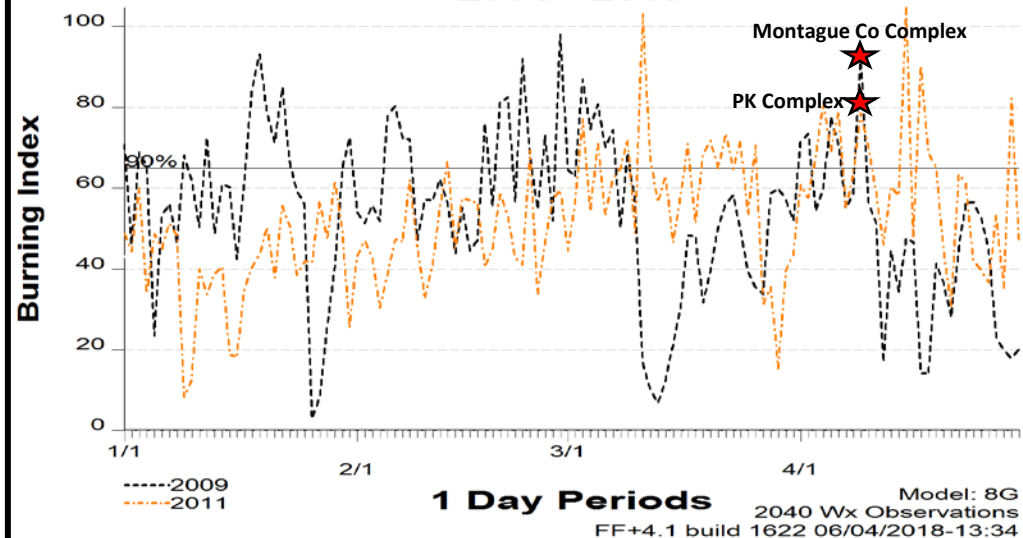


Cross Timbers Normal Fires and Acres Burned January-April

	Jan	Feb	Mar	Apr
Fires	1	3	2	1
Acres	250	540	200	100

Years to Remember: 2009,2011

SIG - Cross Timbers 2001 - 2017



Fuel Model G – Short Needle (Heavy Dead)

Remember what Fire Danger tells you:

- ✓ Burning Index gives day-to-day fluctuations calculated at 2 PM temperature, humidity, and wind.
- ✓ Wind is part of the BI calculation.
- ✓ Watch local conditions and variations across the landscape –Fuels, Weather, and Topography.
- ✓ Stay informed of local fire weather forecasts, especially **WIND**.

Past Experience:

The PK Complex occurred on 4/9/2011 in Palo Pinto County, burning 126,734 acres and destroying 168 homes. This Complex of 4 fires occurred as a result of a Southern Plains Outbreak event. Most of the growth occurred on April 15th with post frontal conditions, strong north winds and low RH. Fire threatened town of Strawn and jumped highways 180 and 16. Significant factors were amount of old dense juniper stands, with live fuel moistures around 80% and two weeks of accelerated drying leading up to the fire. Post frontal afternoon conditions on the 15th from the Possum Kingdom RAWS included Northwest winds from 20-25mph with gusts to 45, RH 6-8%, and temperatures from 72-74 degrees.