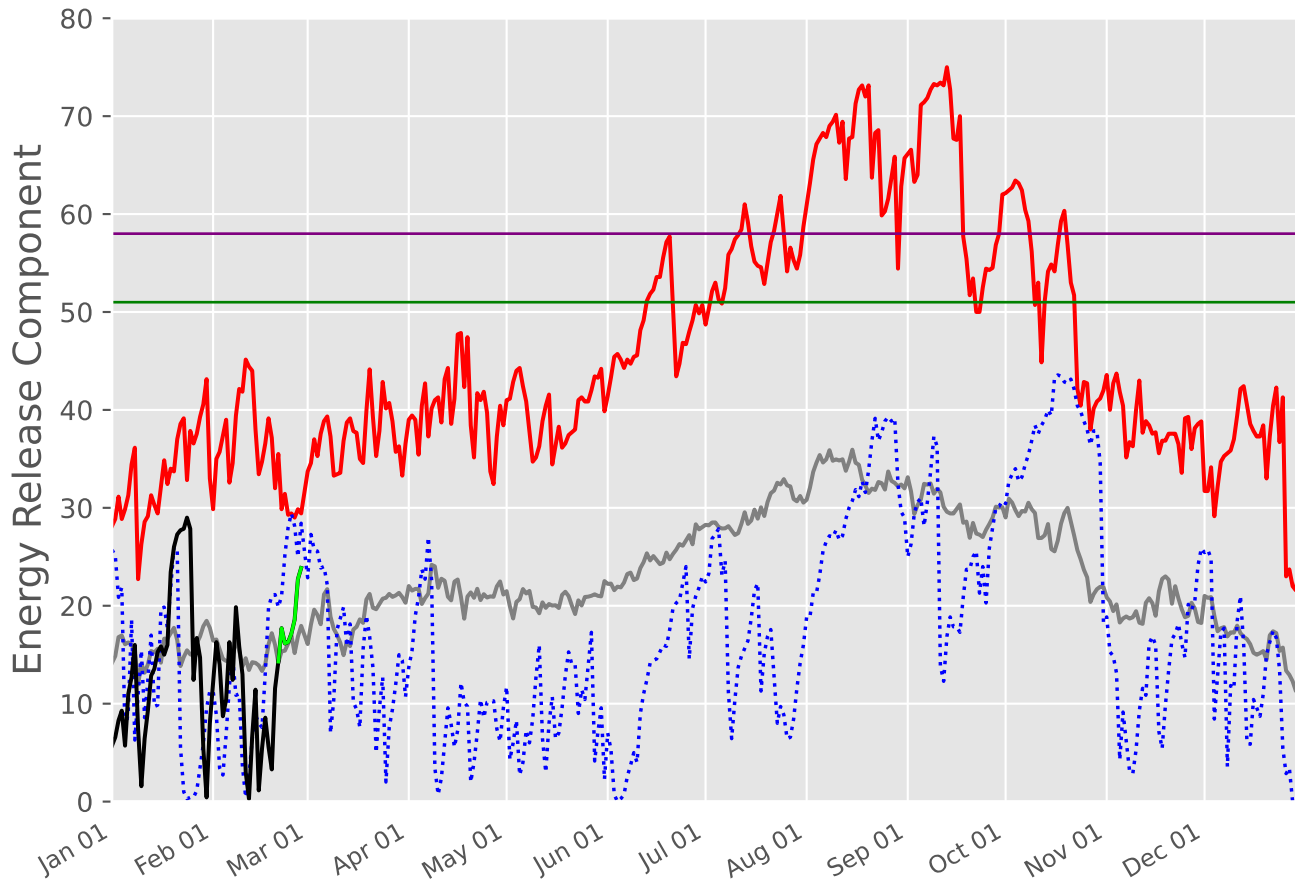


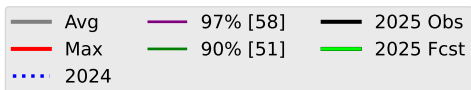
NORTHEAST TEXAS Predictive Service Area

2007-2025



1 Day Periods

Fuel Model: G

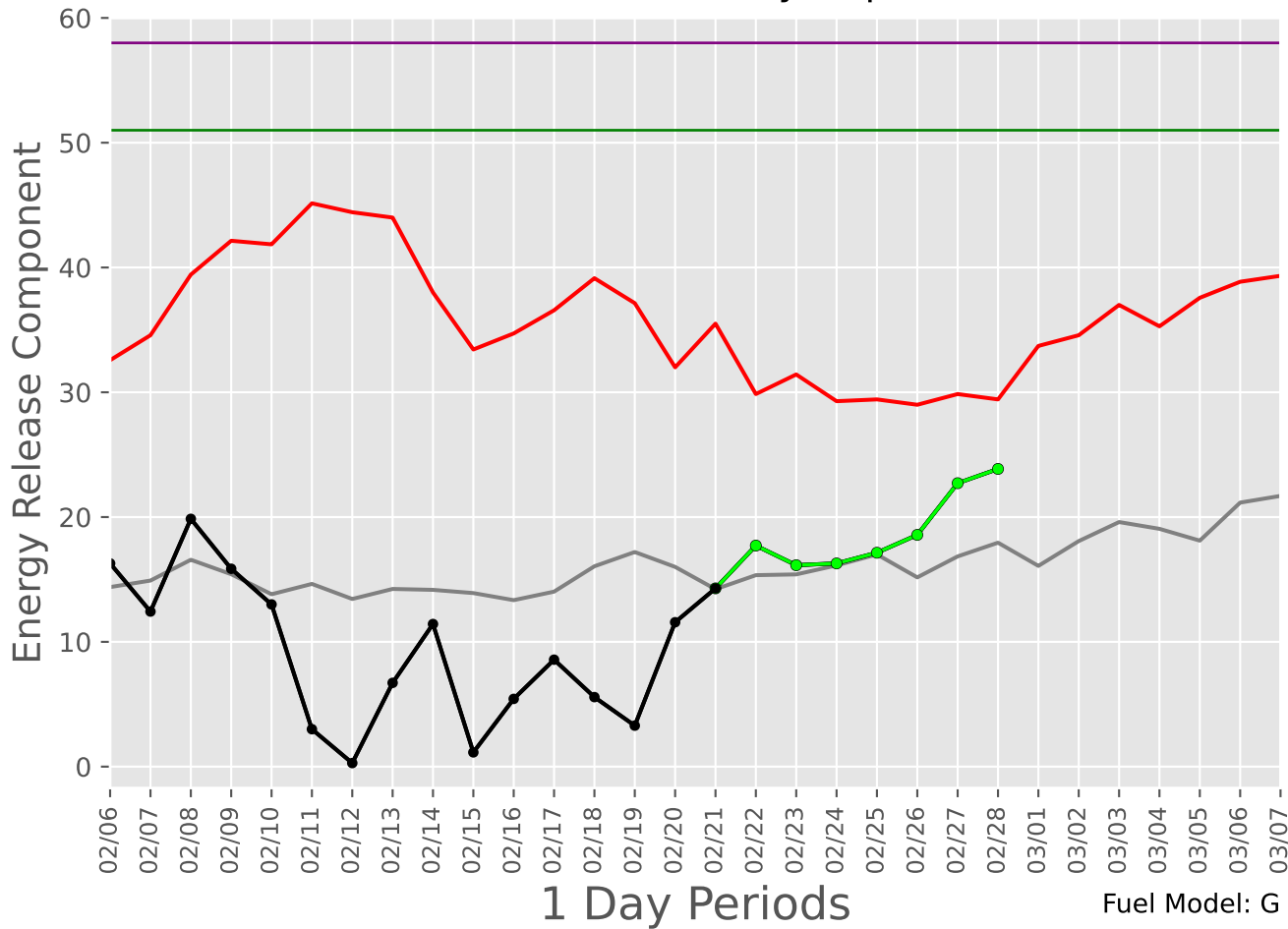


6614 Wx Observations

Generated on 02/22/2025-00:15

NORTHEAST TEXAS Predictive Service Area

2007-2025 - 30 Day Depiction



— Avg — 97% [58] ● Fcst
— Max — 90% [51] ● Obs

Fuel Model: G
6614 Wx Observations
Generated on 02/22/2025-00:15